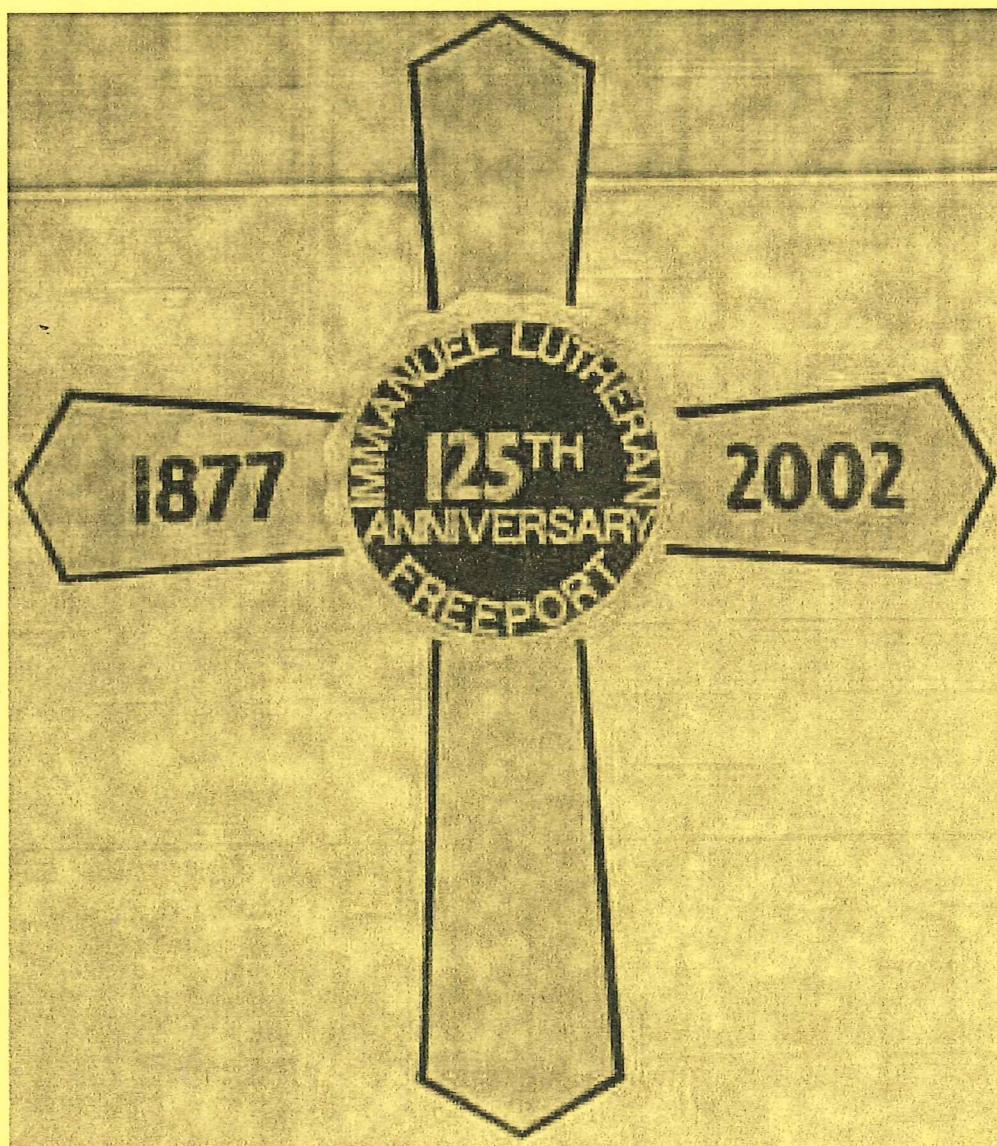
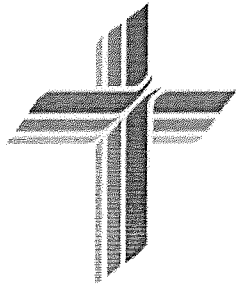


Immanuel Evangelical Lutheran Church and School



Freeport, Illinois



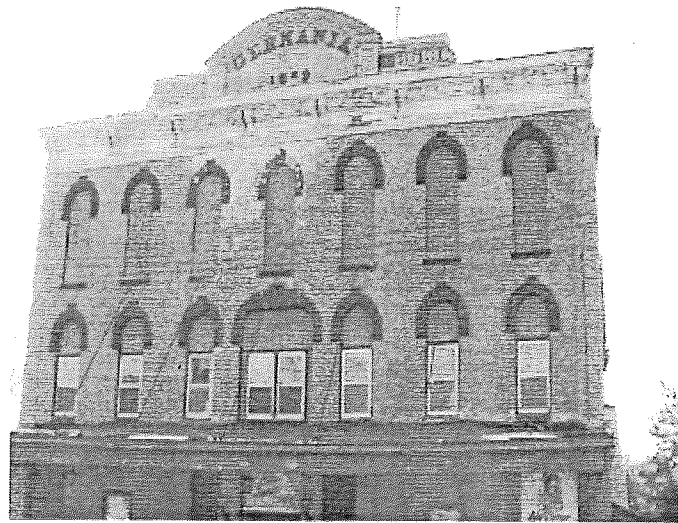
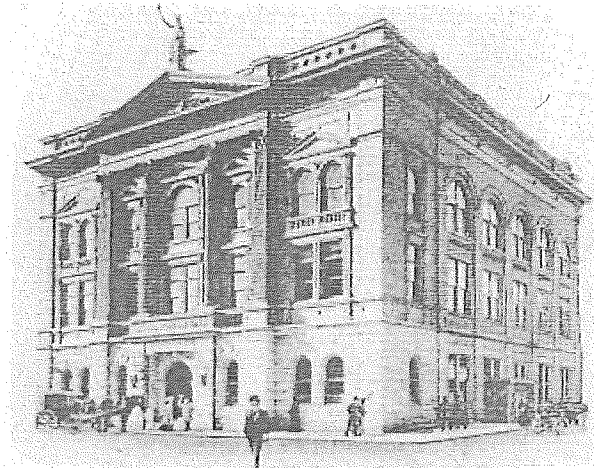
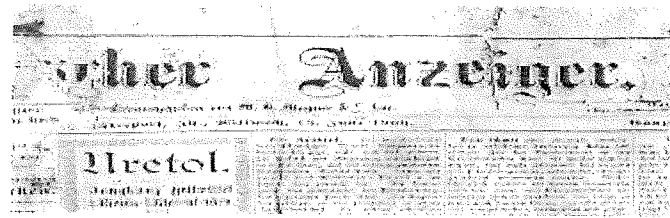


Immanuel Evangelical Lutheran Church and School

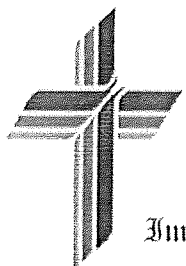
Written and Compiled by
Michael Welton
May, 2004

Freeport Before Immanuel.....	2
The First Church and School.....	4
The Second Church Soon Outgrown.....	6
The Third Church Serves Congregation Nearly a Century.....	8
The Second School Needed as Society Changes.....	10
The Second School Serves Sixty-one Years.....	12
Third School Still in Use.....	14
Fourth Church Ushers in New Century.....	16
School Addition Allows for Growth.....	18
Pastors Over the Years.....	20
Teachers Over the Years.....	22
Support Staff.....	24

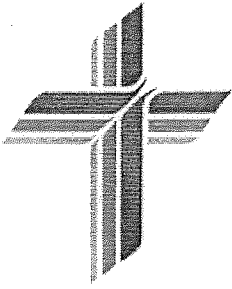
Evidence of Freeport's German culture are the daily newspaper, the *Anzeiger*, pictured right. This issue is from the summer of 1900 and was in the church's cornerstone. The German-American Insurance Building, below, was a grand structure. Many Immanuel members were members of the Germania Club, pictured below right, or its predecessor organizations.



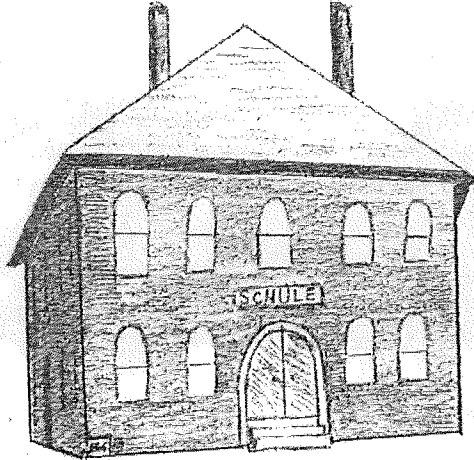
St. John's was one of six German-speaking congregations near Chicago and Pleasant Streets that operated in the late 1800's. The others were St. Mary's Catholic, Salem United Brethren (now known as Trinity Methodist), Zion Reformed (now Zion Church), and Third Presbyterian (1st and 2nd were English). St. John's was the oldest, and most affiliated with Immanuel. St. John's operated a parochial school and taught in German. The three room school was located in the church basement. St. John's closed the school in 1906.



Immanuel, Our God With Us. Matthew 1:23

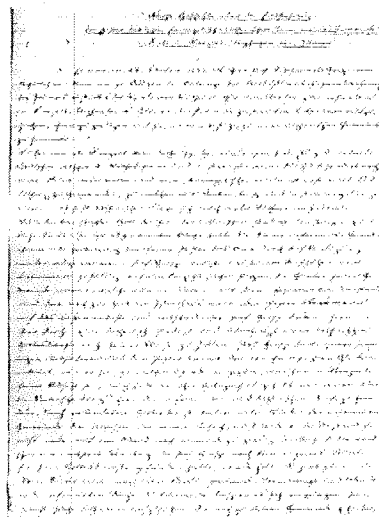


Freeport Before Immanuel

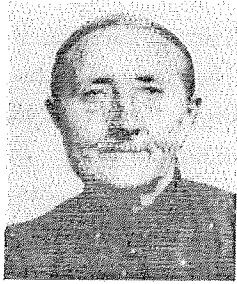


The children of German descent in the area now known as Piety Hill had a few choices of schools in the mid- to late-1800's. The Third Ward School was a public school that taught classes in English. St. Mary's Catholic Church operated a school for a few years in the late 1850's and 1860's. Those classes were taught in German. The English speaking members of St. Mary's attended St. Joseph or the public school. The founders of Immanuel Lutheran Church and School were first and second generation German immigrants, most of whom would not be comfortable at either Third Ward Public School or St. Mary's Catholic School. St. Mary's closed their school around the time that another school opened - The English-German School of Freeport. It was in operation from 1865 - 1871, located on the 700 block of State Street, where the present St. Mary's School is now. The English-German School was not Catholic, nor was it Protestant. It closed when St. Mary's Parish bought the building and used it as their parochial school. They put additions on to the front of the school, enlarging it greatly. St. Mary's used the building until the complex burned down in 1956. The pictures at left show an artist's rendition of the English-German School.

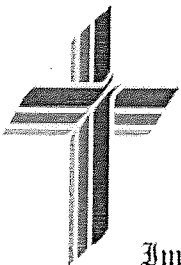
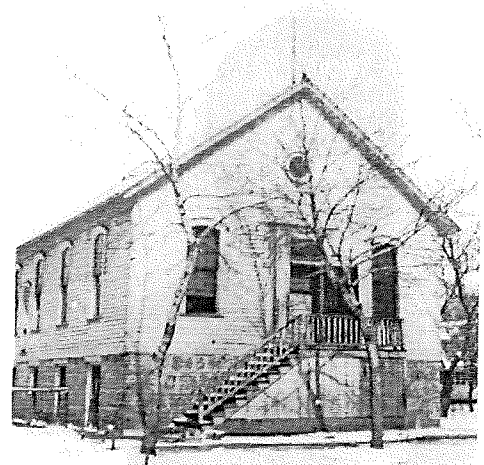
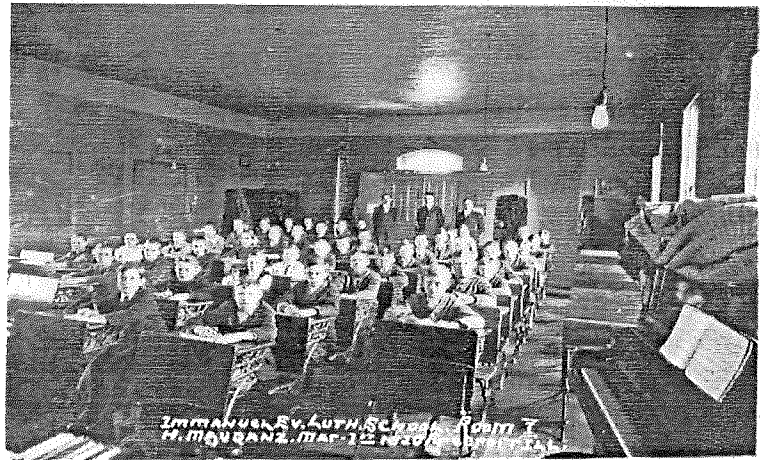
The founding members of Immanuel began meeting in February, 1877. Pastor Grosse, below, and then others, took minutes of organizational meetings. Immanuel has the records from Professor Grosse - meticulously written. However, they are written in a script that is foreign, even to those who speak German. The first minutes are shown below, right.



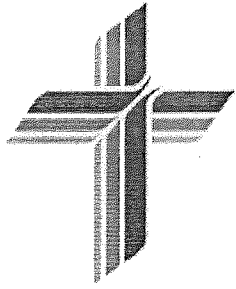
Mrs. John (Sophia) Schroeder (pictured below left) welcomed, encouraged, and hosted Pastor Grosse. Her family is sometimes credited as the founding family of Immanuel. Her descendents include the Schopfs, Phyllis Bicker, and Don Long. The picture of the students in front of the school (below right) has the students standing in the location of the 1886-1900 church.



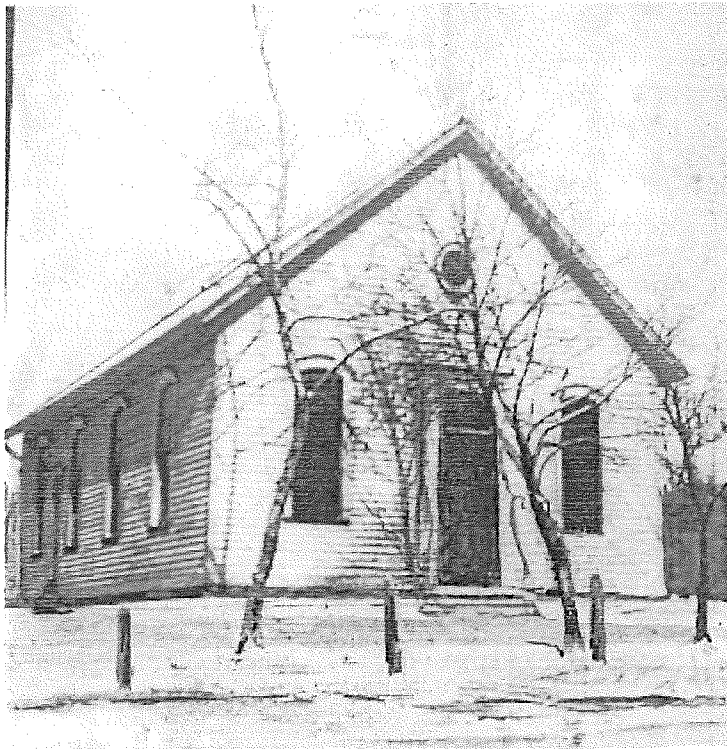
Pastor Grosse was sent by the Lutheran Seminary at Addison, Illinois (now located at Concordia, River Forest). He was to attempt to share God's Word to the point of starting a Lutheran Congregation. He spoke at least twice from the St. John's Church, during a vacancy there. A number of Lutherans were in attendance at St. John's, and they supported Pastor Grosse's efforts. A history published by St. John's Church also notes a number of their members leaving to found Immanuel Church and School. This took place in the Spring of 1877. By May, 1877, Immanuel Lutheran Church and School were officially founded. Services were held that summer at Third Ward School and other rented facilities. They also built their first building that summer. The interior of the first Immanuel building is shown as a classroom, right. The building was hoisted off of its foundation and a full first floor was built allowing for another classroom, shown right below.



Immanuel, Our God With Us. Matthew 1:23



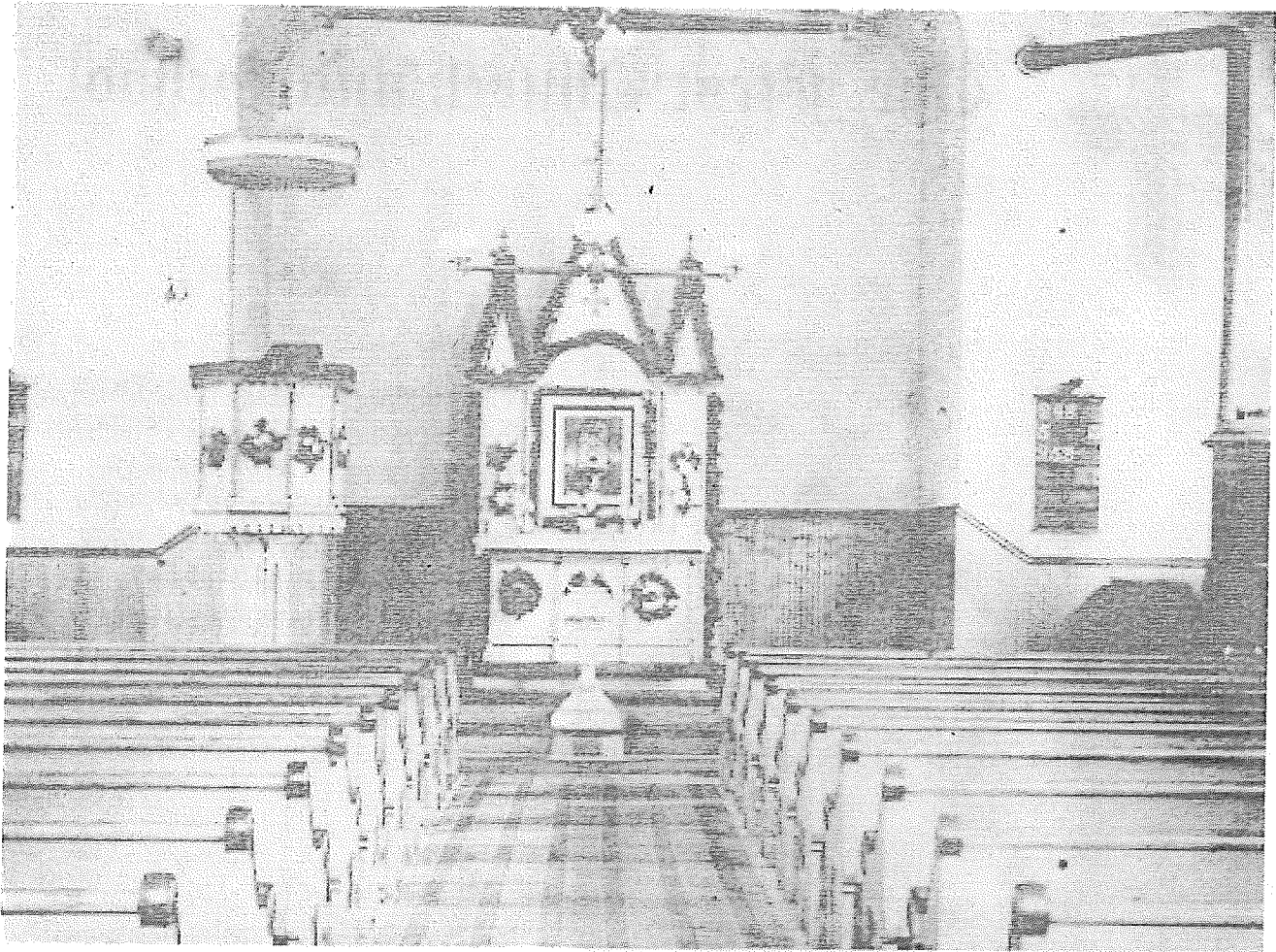
The First Church and School



One building served as a house of worship on Sundays and a one room schoolhouse on schooldays. It was dedicated on Sunday, September 2, 1877; school started the next day. Rev. T.J. Grosse served as the first pastor until Rev. Behrens arrived in December of 1877. The first teacher, Mr. Gose, arrived in September of 1877.

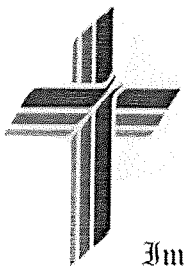
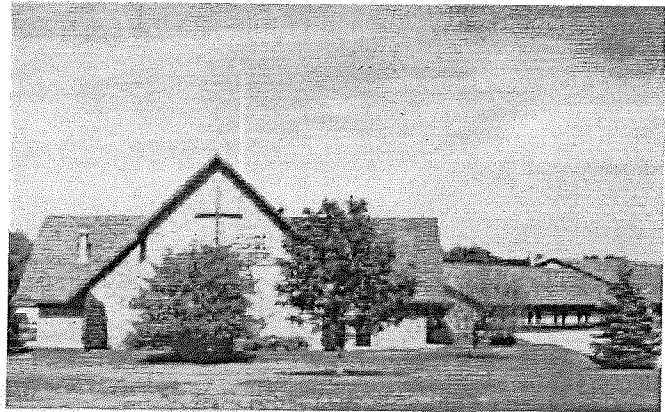
Teachers were called Teacher, followed by their last names. One teacher served all eight grades, as is shown in this turn-of-the-century picture.



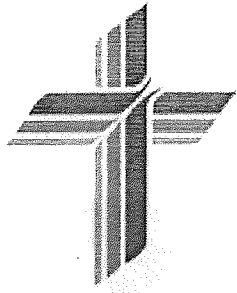


Students attended chapel in the new building, and classes in the old one. The new church accomodated a larger congregation.

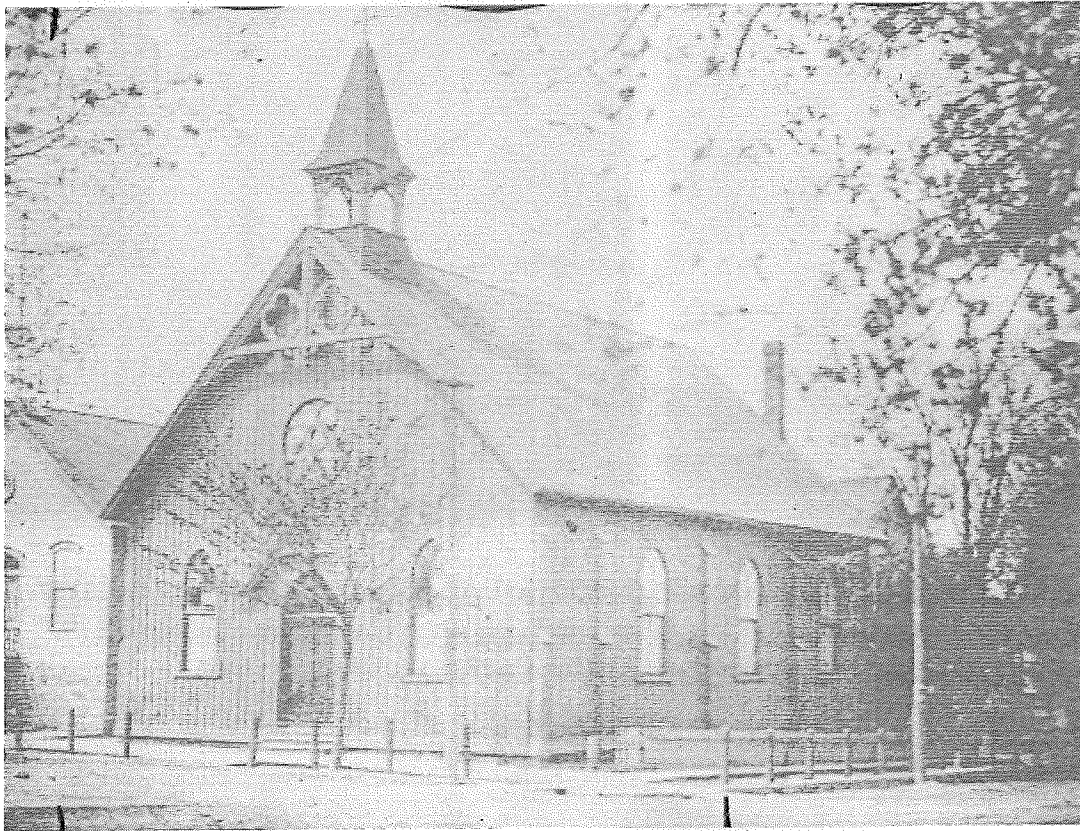
During Immanuel's fastest period of growth, a mission congregation in Lena was also founded. The present church is shown right.



Immanuel, Our God With Us. Matthew 1:23



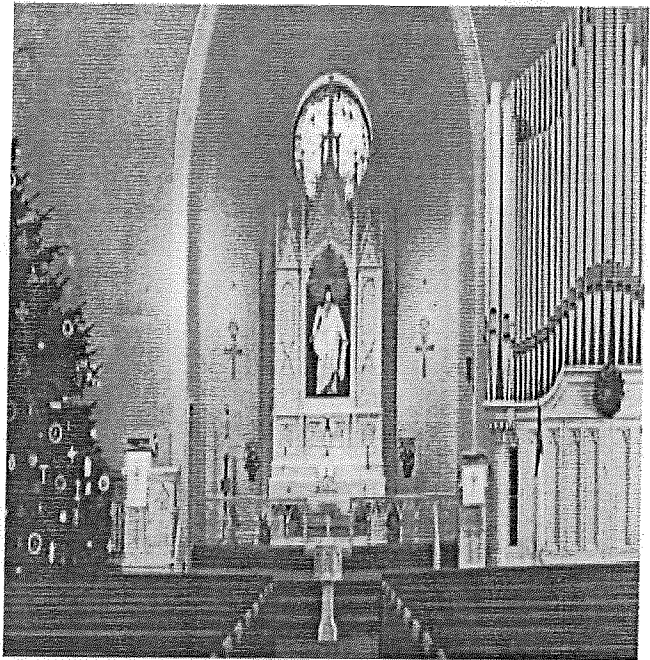
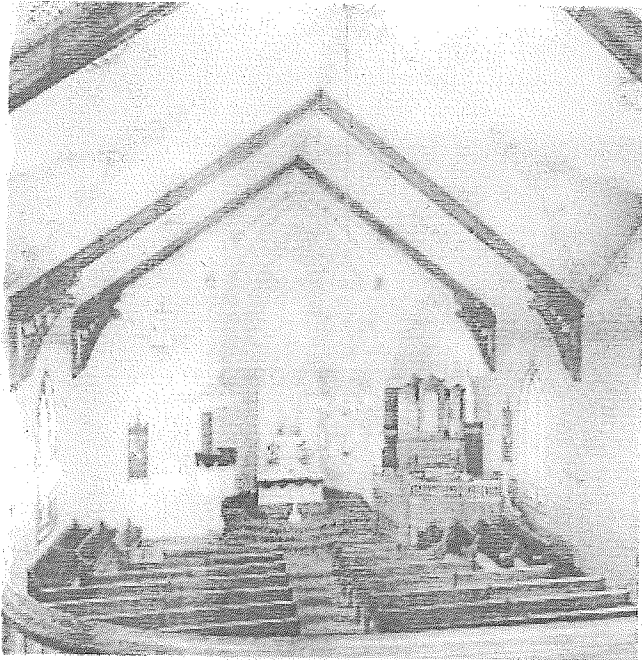
The Second Church Soon Outgrown.



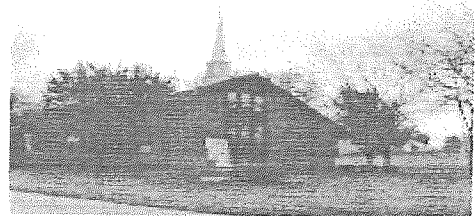
The congregation outgrew its facility and built a structure solely for worship services in 1886. The old church, then used exclusively as the school, is shown next to the church.

Pastors	Dates	Baptized	Confirmed	Married	Funerals
Grosse	Feb. 1877 - Dec. 1877	8	0	0	0
Behrens	Dec. 1877 - April 1881	63	23	19	29
Schmidt	April 1881 - March 1899	624	285	130	190
Landeck	March 1899 - Aug. 1914	486	310	151	136
Seidel	Aug. 1914 - June 1927	268	197	131	113
Schumacher	Oct. 1927 - June 1950	478	463	297	200
Bartling	Oct. 1950 - May 1962	301	228	118	93
TOTALS		2228	1506	846	761

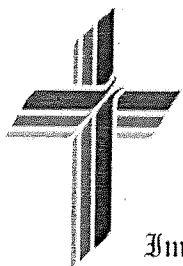
The chart above, from a 90th Anniversary bulletin, shows Immanuel's greatest period of activity took place when the second church was used and H.G. Schmidt was pastor.



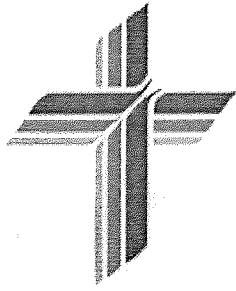
The 1900 church was a lavish structure meant to give glory to God. The Bible verse over the nave in the above left picture shows that the congregation was still German speaking. The verse is Matthew 28:19. The church was redecorated for the 1952 anniversary. The later view is shown above, right.



Classes in the school were conducted in German. Worship services were in German. A break-away group founded Our Redeemer Church as an English-speaking congregation in 1910. Their present church is pictured above left. They were both members of the same "parent" organization - The Lutheran church of Missouri, Ohio, and Other States - now known as The Lutheran Church, Missouri Synod. In 1964, Pastor Bartling and another group left Immanuel to form a more conservative Wisconsin Synod congregation, Our Savior - pictured above right.



Immanuel, Our God With Us. Matthew 1:23



The Third Church Serves Congregation Nearly a Century



Immanuel Ev. Lutheran Church

Cor. South Chicago Avenue and East Pleasant Street

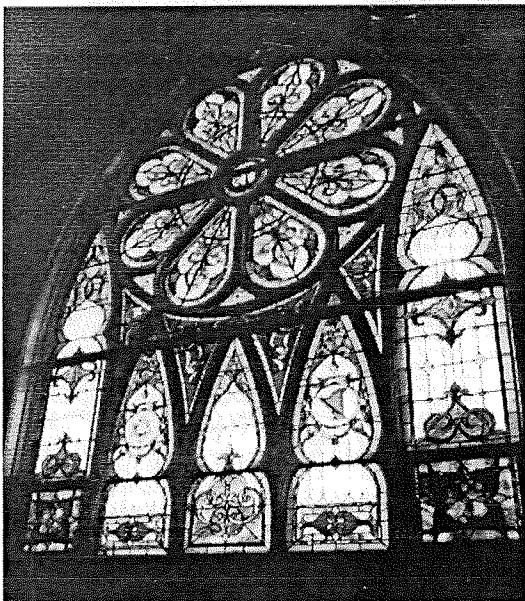
REV. LOUIS SEIDEL, Pastor
Residence: 519 South Chicago Avenue
Telephone, Main 2158

SUNDAY SERVICES: German, 10:00 A. M. English, 7:30 P. M.

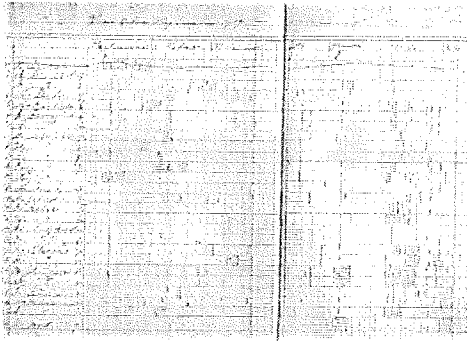
COMPLETE EIGHT-GRADE WEEK-DAY SCHOOL.

Teachers: B. Edw. Koschmann, H. F. Bode

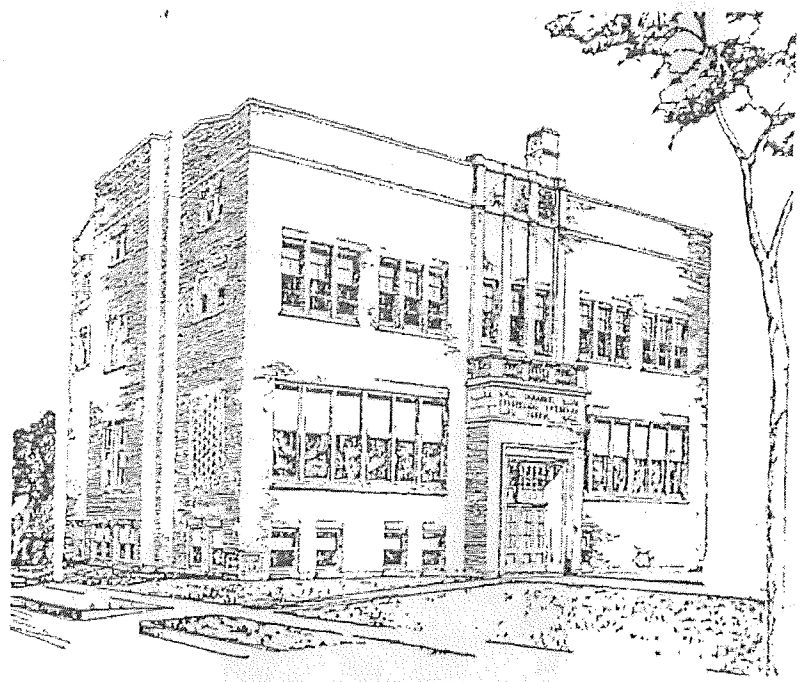
The church and school were in a slow transition from German-speaking to English-speaking. Records were kept in either language at this time; for example Ladies Aid records were in German, but most school records were in English. The last German worship service took place in 1954. This 1923 worship schedule lists services in both languages: German at 10:00 AM, and English at 7:30 PM.



In 1900, 14 years after the second church was built, the Immanuel congregation built again. They built a large brick sanctuary, above left, replacing the 1886 structure. One of its beautiful stained glass windows is pictured below.



Anti-German sentiment was rampant in America in 1917. In March of 1917, America broke off relations with Germany as "U-boats" sunk four American ships. In April, 1917, the USA declared war on Germany. Notice the attendance records above from Immanuel in 1917; the months are written in German through February of 1917, and are written in English from March of 1917 on. At right is the architect's plan for the new school.

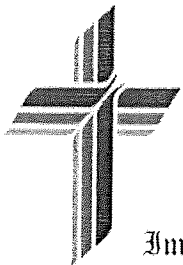


IMMANUEL LUTHERAN SCHOOL

Pastor Landeck sought donations and the purchase of bonds to finance a new school building. He listed overcrowding and the desire to split grades into three classrooms as a reason for the new building.

For some time it has been clear to Immanuel Congregation that the school was in need of a new and modern building, the old and honored first little frame church building of 46 years ago having become entirely inadequate and detrimental to the health of the children, the congregation and the school having entirely outgrown the old school house.

The proposed new school building, now under construction, will be modern and up-to-date in every respect, containing four spacious school rooms and a library on the first floor, a well equipped assembly hall on the upper floor, and, besides other necessities, amusement rooms for the young folks in the basement. All indications show that the school will soon be able to open a third class, which will then leave but one room on the main floor for confirmation classes, choirs, and other board and society meetings. This will show that the congregation is not building any more than the present and the visible near future of God's grace require. The total cost of the new school building, including architect's fees and additional ground, will be \$65,000.



Immanuel, Our God With Us. Matthew 1:23



Immanuel Ev. Lutheran Church

Cor. South Chicago Avenue and East Grand Street

Rev. LOUIS BERGMAN, Pastor
 Rectory: 319 South Chicago Avenue
 Telephone, New 1111

SUNDAY SERVICES: German, 10:30 A. M. English, 10:30 P. M.

COMPLETE EIGHT GRADE SUNDAY SCHOOL

Teachers: G. Ede, N. Schwaner, E. F. Stee

Population, 100,000 population, 120 miles west of Chicago, and the nearest transportation facilities, is a growing fact and national shipping center.

Immanuel Evangelical Lutheran Church is centrally located in one of the best business sections of Detroit, just five blocks from the main business part of the city. Within a radius of one or three blocks in every direction there are numerous commercial and residential thoroughfares. The congregation has a membership of 1,000 and a considerable holding of real estate in the city. Besides 17 mission families, it numbers over 400 souls, of which 25 are non-resident members confirmed members and the age of 14. The control and management of all the congregation's property, and which are noted in a detailed listing membership of 14,000 about 21 years of age. The officers of the congregation have authority only as far as the very necessary body delegates to them. All non-resident members are the same during months of absence and will be counted as one contribution.

The interior arrangement and decoration of the church building is one of the most beautiful in the city. The collection of the interior shows property, including the proposed new school building, is one of the most beautiful of about \$100,000. The present church building of substantial brick construction, built in 1870, was nearly destroyed, repaired throughout and finished with a new roof in 1912.

The church and mission property is the form of a cross.

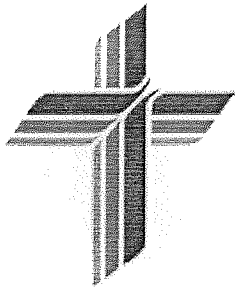
One of the great things and a real need for which Immanuel Congregation has all cases in which God's grace is the most responsible and efficient Christian school.

change of two very competent teachers, Prof. R. Ede, Kaufmann and Prof. H. F. Ede, graduates of our German Lutheran College of River Falls, Wisconsin, who bring with them the highest State University diplomas issued by the State school authorities. The principals of Immanuel School are admitted to the Evangelical High School, without examination, and have their own in their classes.

Immanuel Congregation wishes above all, the rising school and Christian training which is needed and required during the past 10 years with the Church of Christ. The many church members and the great number of young folks holding fully in the church have the feeling, which is present and great. The school has, indeed, proved and proved a fine foundation for the future membership growth and continuous prosperity of the congregation.

It is well known it has been clear to Immanuel Congregation that the school was in need of a new and modern building, the old and honored first little frame church building of 46 years ago having become entirely inadequate and detrimental to the health of the children, the congregation and the school having entirely outgrown the old school house.

The proposed new school building, now under construction, will be modern and up-to-date in every respect, containing four spacious school rooms and a library on the first floor, a well equipped assembly hall on the upper floor, and, besides other necessities, amusement rooms for the young folks in the basement. All indications show that the school will soon be able to open a third class, which will then leave but one room on the main floor for confirmation classes, choirs, and other board and society meetings. This will show that the congregation is not building any more than the present and the visible near future of God's grace require. The total cost of the new school building, including architect's fees and additional ground, will be \$65,000.



The Second School Needed as Society Changes

LAY CORNERSTONE NEW IMMANUEL SCHOOL SUNDAY

PHYSICAL ADDRESS AND PHONE
 1100 1/2 1st St. S. Freeport, Minn.
 Phone 1100

The laying of the cornerstone for the new Immanuel Lutheran school building will take place Sunday afternoon at 2:30 o'clock at the corner of 1st and 1/2 1st streets. The new building will be a two-story structure of brick and concrete. The building will be a modern school building of the latest design. The building will be a two-story structure of brick and concrete. The building will be a modern school building of the latest design. The building will be a two-story structure of brick and concrete. The building will be a modern school building of the latest design.



The students above were among the first in the new 1923 school. A new school was to be built. It was front-page news in Freeport that October.

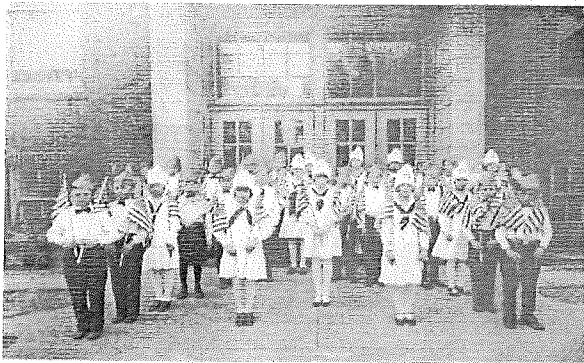
The dedication included an outdoor ceremony and a worship service across the street at Immanuel Church. This list of students was in the cornerstone, opened 60 years later.

Handwritten list of names, likely the cornerstone record mentioned in the text above. The names are written in cursive and include:

- Walter J. ...
- John ...
- ...

Pastor Landeck's letter also stated the unhealthy conditions offered the students in the 1877 structure. This may have been particularly true in the lower level. In a 1996 interview, Pastor Landeck's daughter said that the conditions were considered contributing factors in the deaths of some students. She was also a student during that era. There is no way of proving that any more, but attendance records from 1923 indicate that from one classroom, four Immanuel students died at various times of the year.

...
...
...
...



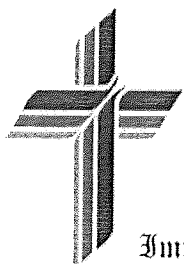
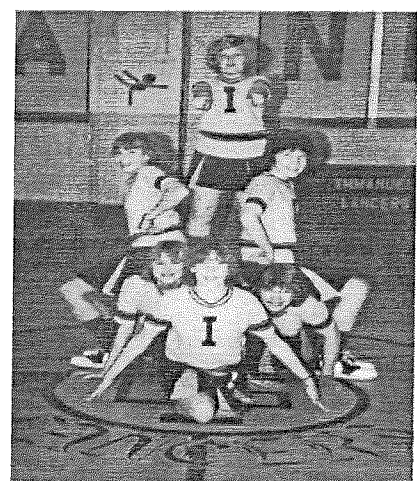
The school became fiercely American at in the 1920's and later. For many years, a highlight of the year was a patriotic parade through Freeport on the 4th of July. The school picnic followed at an eastside park.

The 1960's and early 1970's were a time of great rebellion in the USA. Immanuel Lutheran School faced great challenges. There was no tuition at Immanuel School for Immanuel Church members until 1986; it was difficult to purchase current supplies. The building was expensive to maintain. Enrollment dropped to 34 children. Immanuel stopped offering 7th and 8th grades from 1970 through 1976. Some of these details are listed below in the Stephenson County School Directory.

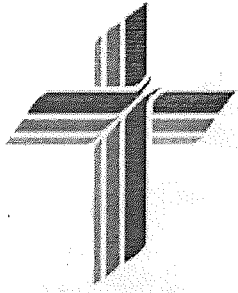


Under Mr. Bode's direction, Immanuel was known for its outstanding musical presentations. This tradition continues at Immanuel. This cast pictures above is from the early 1950's. The Immanuel teams became the "Lancers" and played the first Tri-State games in 1963. The team pictures below are form the early 1980's.

EMMANUEL LUTHERAN SCHOOL
 1000 W. 1st St.
 Freeport, Ill. 62541
 Phone: 618-238-1111
 Fax: 618-238-1112
 Website: www.immanuel-lutheran.org

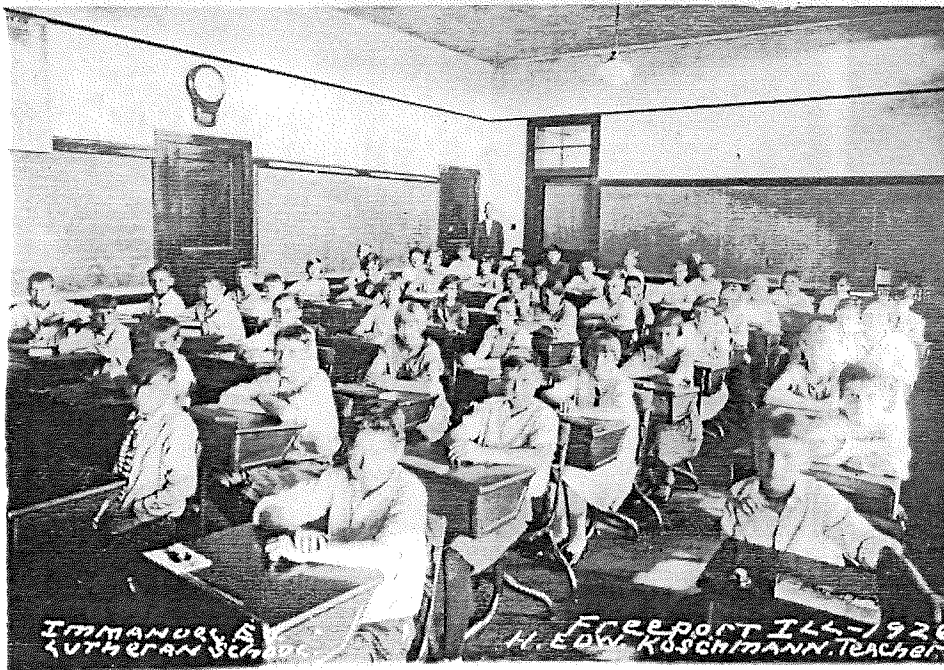


Immanuel, Our God With Us. Matthew 1:23

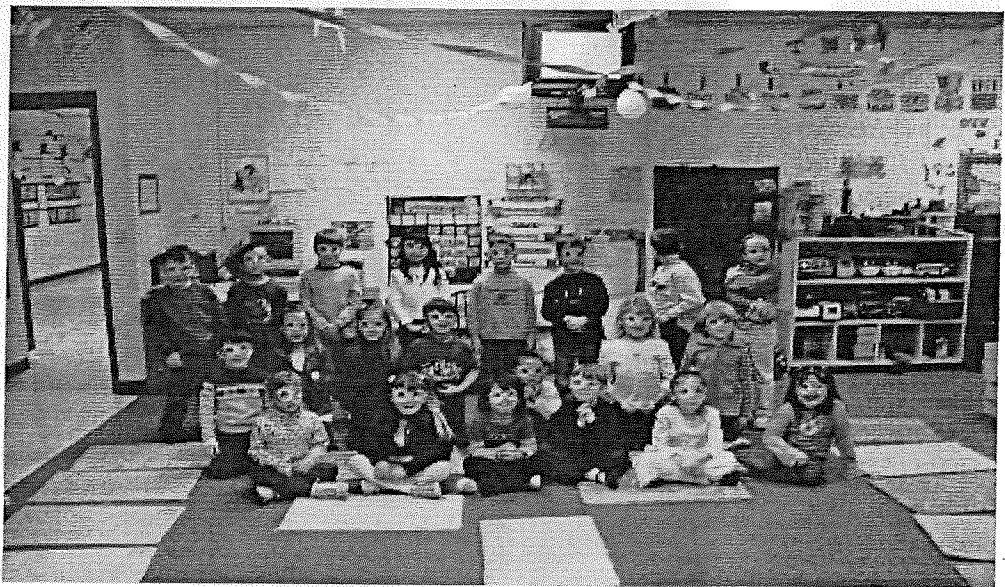
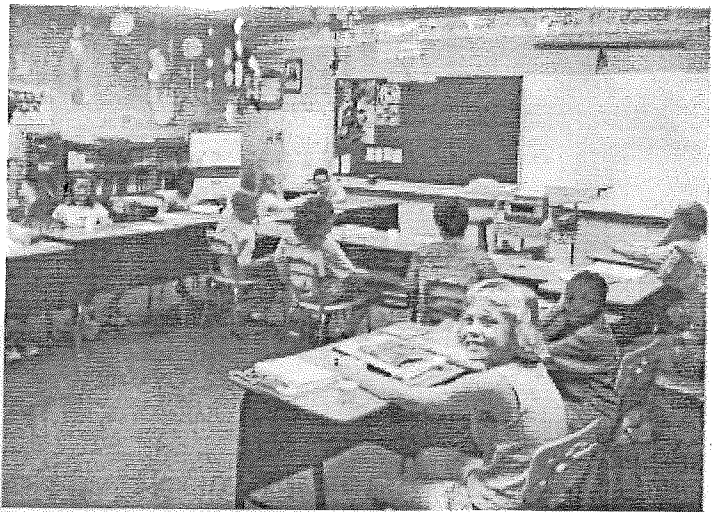


The Second School Serves Sixty-one Years

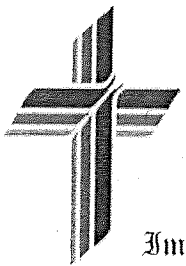
The new school was deluxe. It was a solid brick building with a boiler for even heating, huge windows to allow adequate lighting, and indoor plumbing. There were three large classrooms, a meeting room which could also be converted to a classroom, an auditorium with a projection booth for movies, a gymnasium, a kitchen, a bowling alley, and a soda fountain. It would serve as a school and a social center.



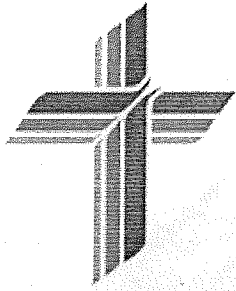
As deluxe as Immanuel Lutheran School was in 1923, by the 1980's it was getting old. There were structural difficulties. The meeting room was converted to a classroom. The bowling alley was converted into a classroom. The stage was removed to enlarge the gym. The stairs created difficulty. The gym was upstairs above a classroom, and was noisy. The fire marshal demanded major changes.



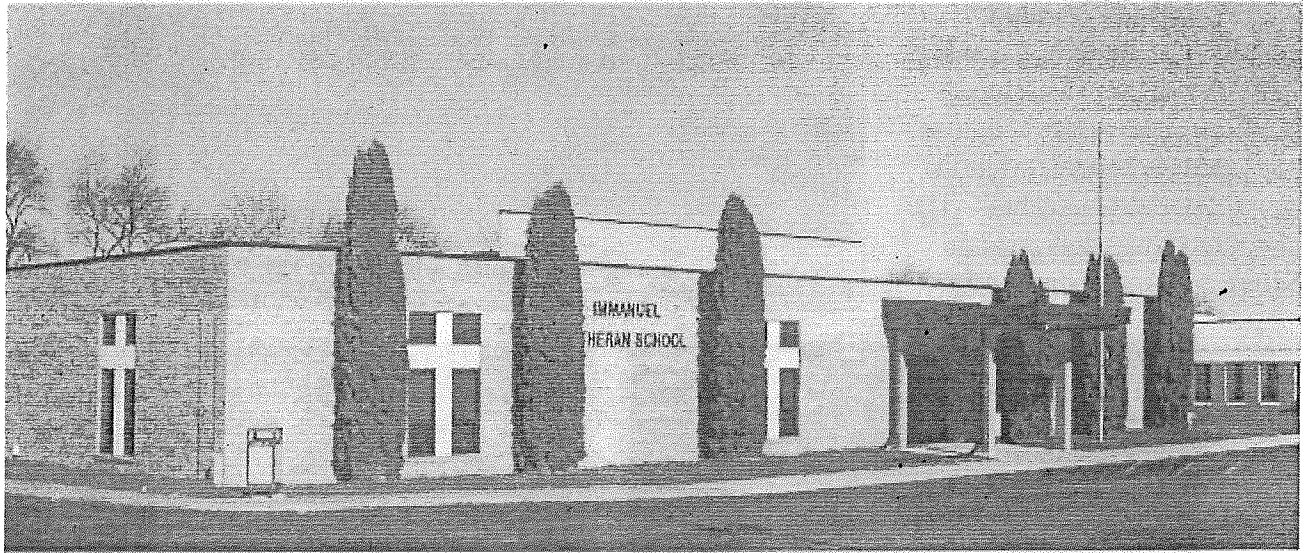
Pictures of children taken in 2002 through 2004.



Innmanuel, Our God With Us. Matthew 1:23



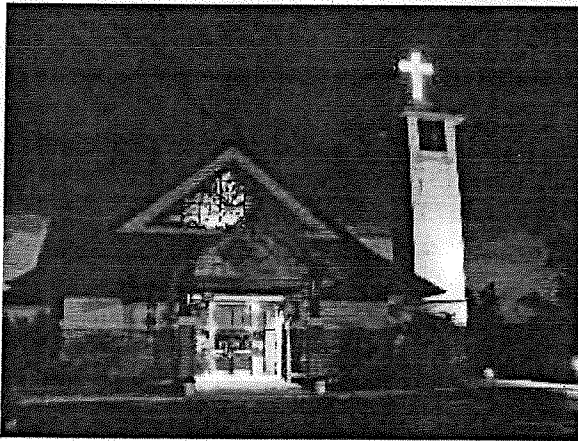
The Third School Still in Use



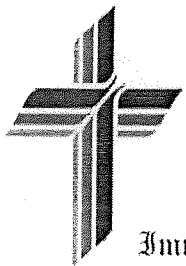
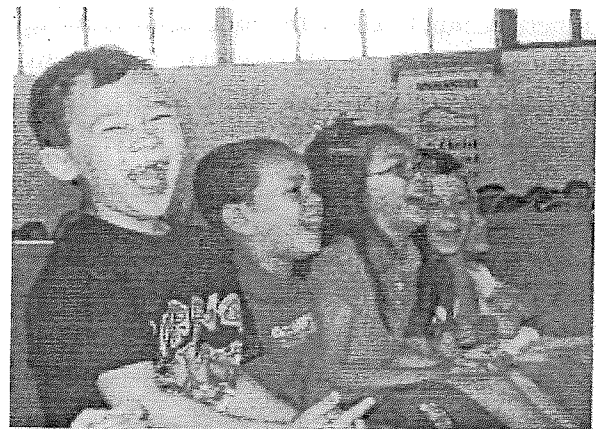
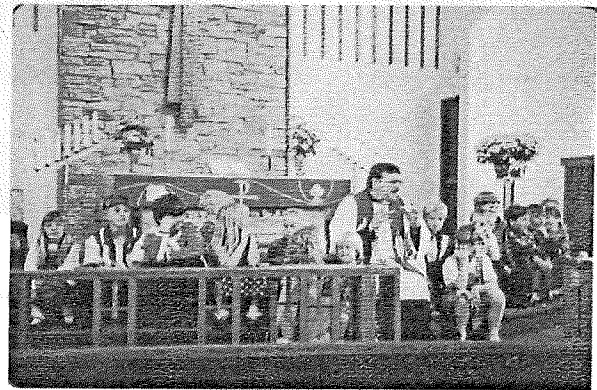
The decision was made to build a new school on property that had been purchased in 1977. That property was among corn fields on the far west side of Freeport, on Pearl City Road. It was a difficult decision to leave the beloved old school. The fact that the Immanuel congregation was without a pastor during that time added to the difficulty. The leadership of Principal Chuck Peterman and many members of Immanuel Lutheran Church helped the congregation through these times. The Lord provided the resources and the guidance when his people needed it. Also, by the time the actual groundbreaking took place the congregation had a new pastor - Rev. Willis Schwichtenberg. These pictures show the groundbreaking ceremony for the new Immanuel School.



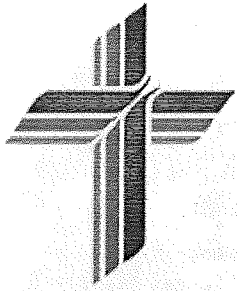
The Immanuel congregation was faced with a 92 year-old building as a place of worship. The steeple had been removed a generation earlier, but the roof still leaked. There was inadequate parking. Two sets of steps were at the church's entrance. Many saw those as obstacles to the spreading of the Gospel and to church growth. The building was sold in 1993 to St. Martin Missionary Baptist Church. Both congregations used the building while the new church was being built. The new church was dedicated on Saturday, December 20, 1993.



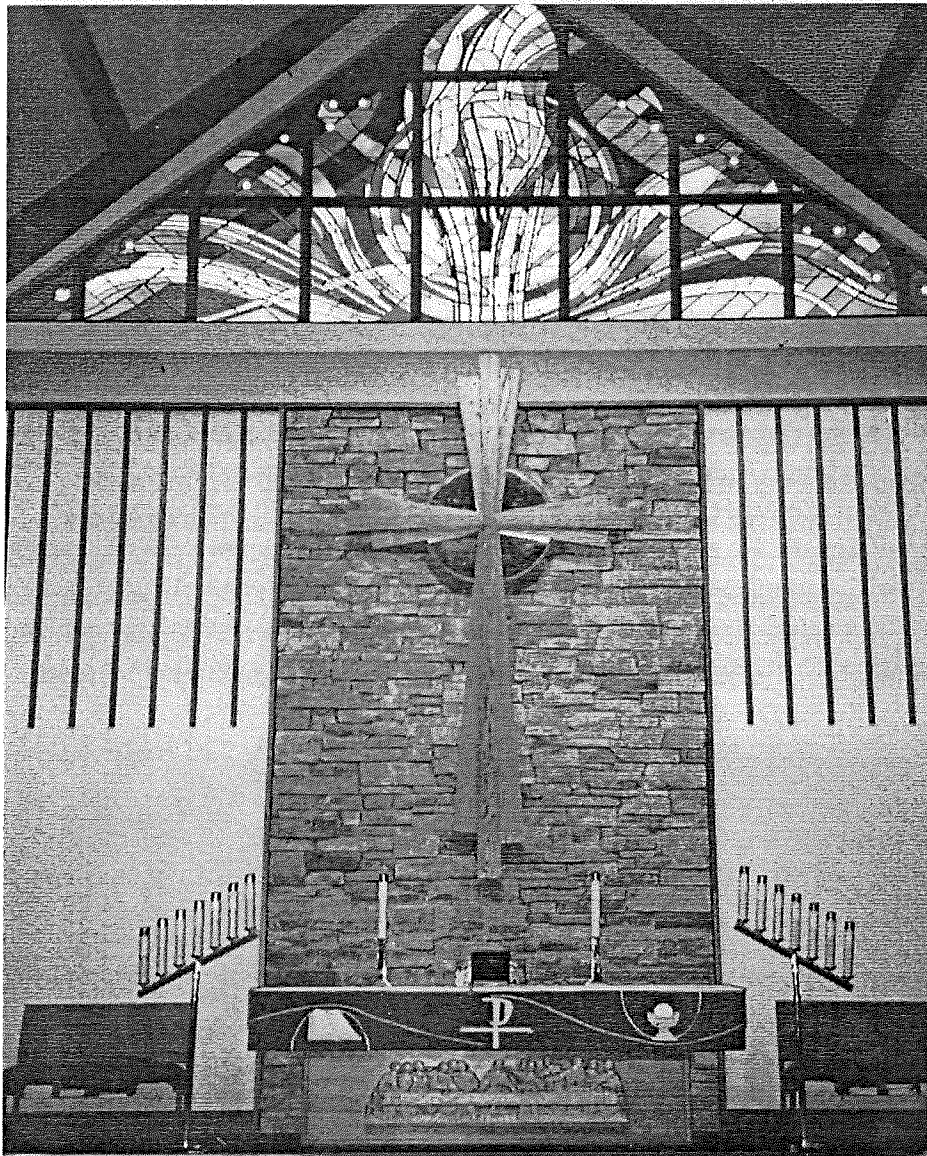
The church as seen from the main entrance at night (above). The church is a welcoming place to the many children of Immanuel (right).



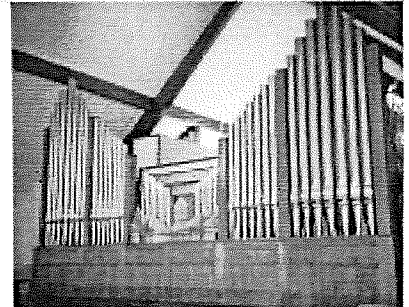
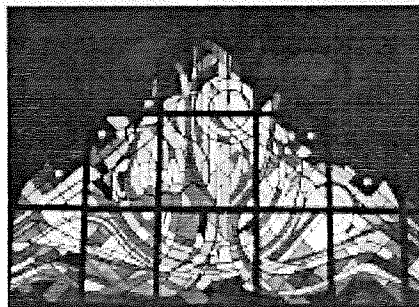
Immanuel, Our God With Us. Matthew 1:23

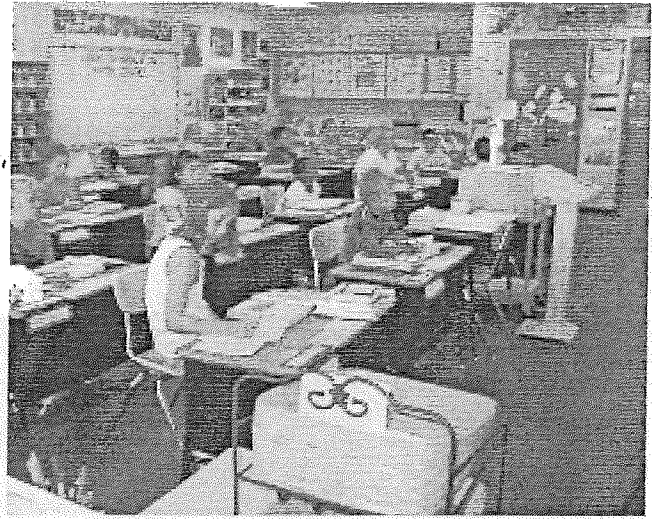
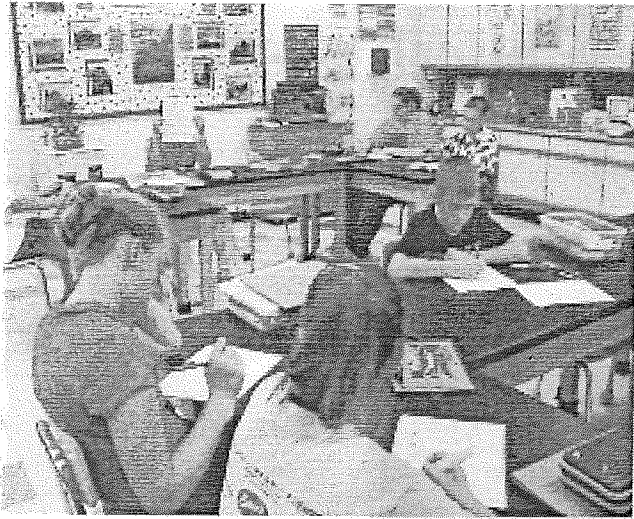


The Fourth Church Ashers in New Century

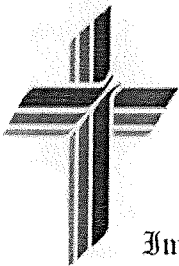
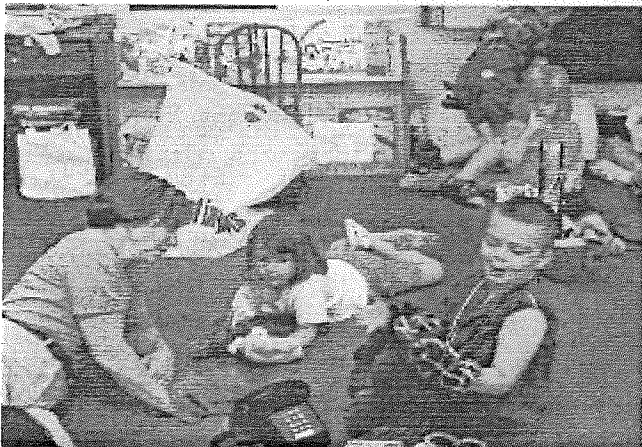


The three stained glass windows seen from inside the new church sanctuary represent The Father (left), The Son (below left), and the Holt Spirit (below center). The organ was moved from the 1900 church (below)

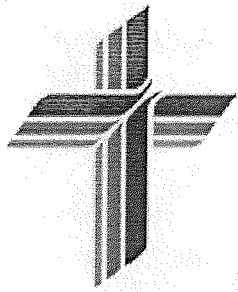




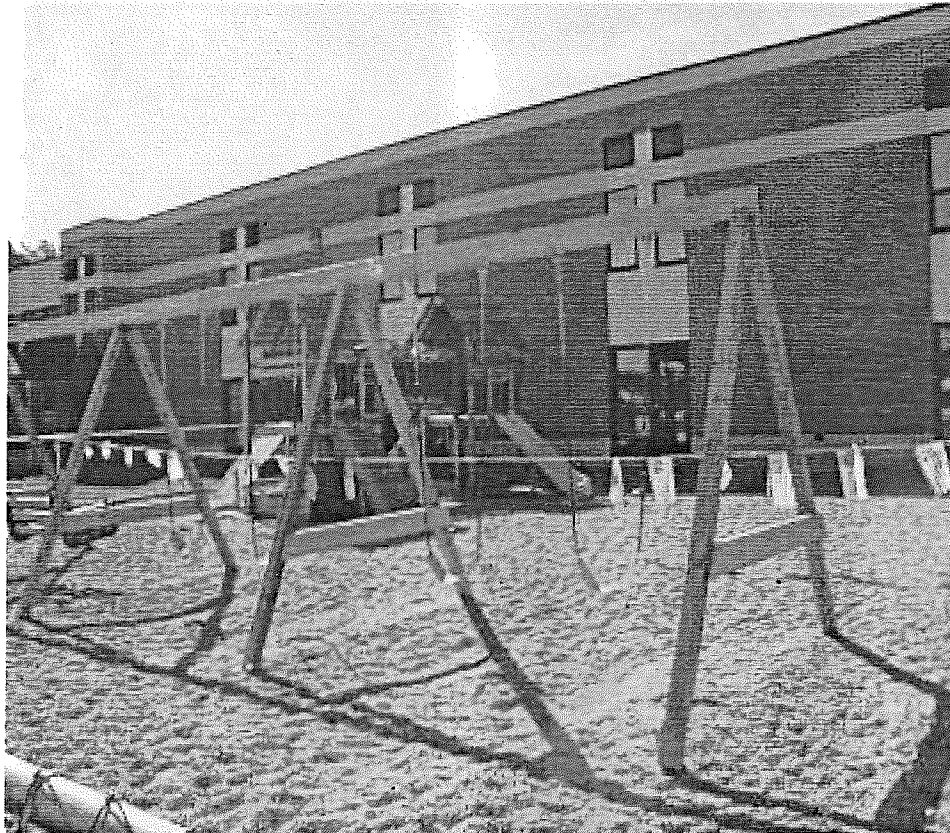
The theme for the fund drive to finance an addition to the 1984 school was "Catching Up to the Future." By 1997, all eight grades were split. No class had more than one grade at a time in it. Two classes were meeting in the church lower level. One class was meeting in the school office, with the principal and the secretary operating out of make-shift spaces. A storage room was converted into a library, and then later into a classroom. The future was here. The school needed more space. The fund drive was on. The goal was four rooms at the west exit. The cost was expected to be \$300,000. Fund-raiser after fund-raiser took place. A pledge program solicited church and school families. The money was raised after much effort. Near the end of the effort, word came that Immanuel School would receive an inheritance from a former student no longer living in Freeport. He attended the old, old school, graduating in 1916. His was a two-room German-speaking school that prepared him well for high school, college, and life. In gratitude to God and to Immanuel Lutheran Church and School, his gift finished the church and allowed a larger addition than would have been possible otherwise. It included five large classrooms, a library, a computer lab, and an extended care facility.



Immanuel, Our God With Us. Matthew 1:23

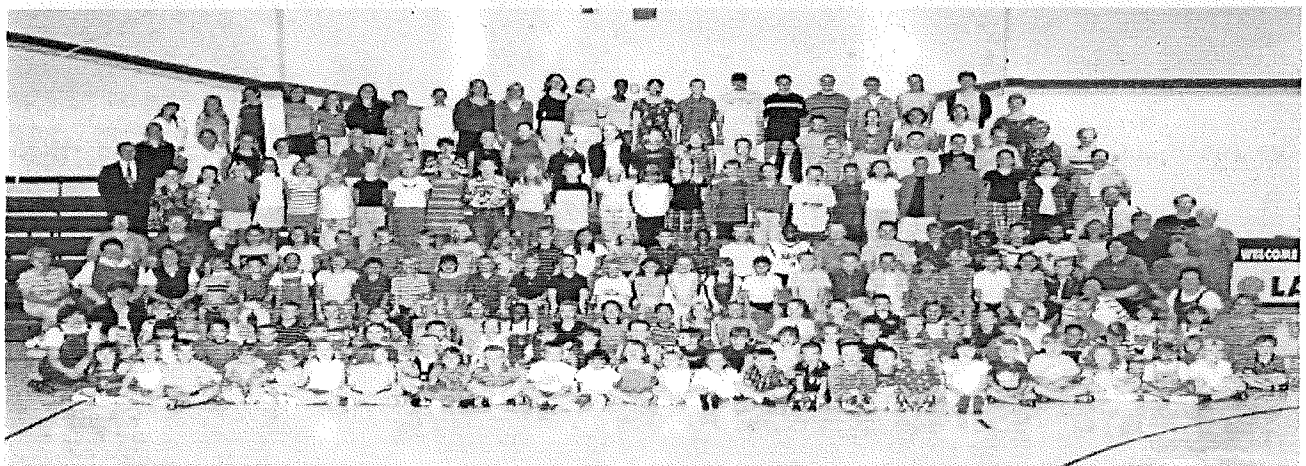


The School Addition Allows for Growth

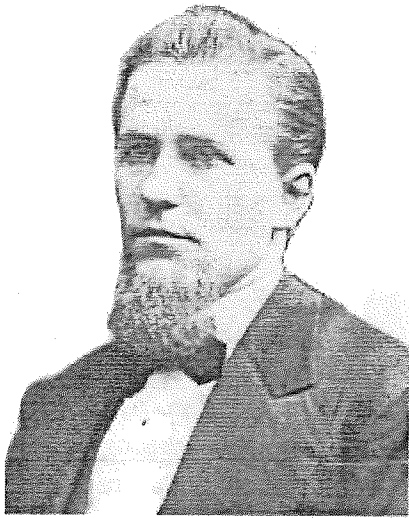


Daycare facility

The ground-level of the new addition had room for expansion. An extended care program moved into that space. The early childhood playground is shown in the foreground of the addition (left). A latch-key program began in 1996. A daycare opened in August, 1999. That program meets the needs of families with three, four, and five-year old children needing all-day care. The program includes preschool classes, lunch, recreation and activities, and of course Jesus-time.



Each grade or subject area had its own classroom. The 6th, 7th, and 8th grades had recently become departmentalized with subject-matter specialists teaching in their major fields. The building was furnished with a larger library and a computer lab. The school enrollment at the time of this all-school picture on August 27, 2002 was 200 children.



Rev. T.J. Grosse, 1877



Rev. F. Behrens, 1877-1881



Rev. H.G. Schmidt, 1881-1889



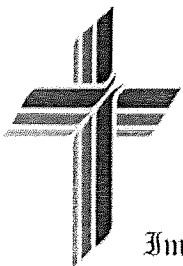
Rev. A.C. Landeck, 1899-1914



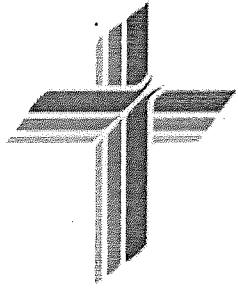
Rev. Louis Seidel, 1914-1927



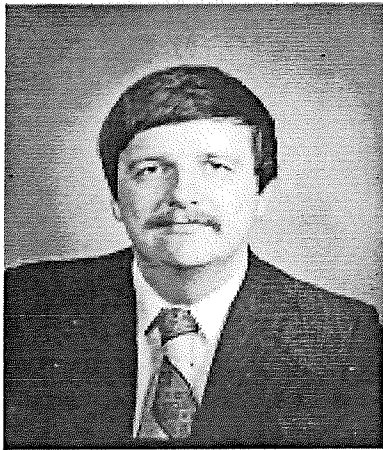
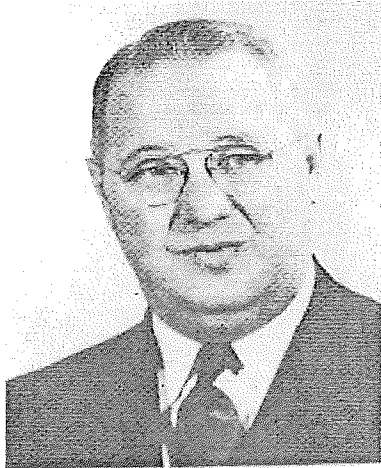
Rev. Otto Schumacher, 1927-1950



Immanuel, Our God With Us. Matthew 1:23



Pastors Over the Years



Rev. F.E. Bartling, (above left) 1950-1964
Rev. William Griebel, (above center) 1965-1974
Rev. L. James Brooks, (above right) 1976-1981
Rev. Willis Schwichtenberg, (left) 1982-Present

Kerry Hoops as Phillip Melanchton in a Reformation skit with
Pastor Schwichtenberg as Dr. Martin Luther.



**TEACHERS
1877-1910**
F. Gose
F. Kretzman
T. Baumbart
O. Kolb
M. Klee
E.E. Selle

64-67	Lauterbach 7-8; Medler 5-6; Holschen 3-4; Hoffmann 1-2; Kasch K
65-66	Lauterbach 7-8; Medler 5-6; Holschen 3-4; Hoffmann 1-2; Kasch K
66-67	Lauterbach 7-8; Medler 5-6; E. Morrison ; Hoffmann 1-2; Kasch K
67-68	Lauterbach 7-8; Medler 5-6; Morrison 3-4; Hoffmann 1-2; Kasch K
68-69	Lauterbach 7-8; Medler 5-6; H.F. Bode 3-4; R. Luebkert ; Kasch K
69-70	D. Boness 7-8; Medler 5-6; H.F. Bode 3-4; R. Bartling ; Kasch K
70-71	D. Boness 7-8; D. Truster; H.F. Bode 3-4; Wierenga-Pattor; Kasch K
71-72	Helm; Messaler; Bode; Gohike; Langdon; Kasch K
72-73	Helm; Bode; Eliper; Narr; Kasch K
73-74	Norson Helm; H.F. Bode; Narr; Moore; D. Kolesch; Lietz
74-75	W.F. Schroeder; H.F. Bode; Adrienne Welch; Lietz
75-76	W.F. Schroeder; H.F. Bode; Adrienne Welch
76-77	W.F. Schroeder; H.F. Bode; Adrienne Welch
77-78	W.F. Schroeder; H.F. Bode; Mrs. Herb Schol
78-79	A.E. Deering; H.F. Bode; Mrs. Deering
79-80	A.E. Deering; H.F. Bode; Mrs. Deering
80-81	A.E. Deering; H.F. Bode; Mrs. Deering
81-82	A.E. Deering; H.F. Bode; Mrs. Deering
82-83	A.E. Deering; H.F. Bode; Mrs. Deering
83-84	Arion Hueter; H.F. Bode; Miss Polansky
84-85	Arion Hueter; H.F. Bode; Ruth Brenner
85-86	Arion Hueter 6-8; H.F. Bode 3-5; Ruth Brenner K-2
86-87	H.F. Bode; Miss Wassman; Verma Bishop
87-88	H.F. Bode; Miss Wassman
88-89	H.F. Bode; Miss Wassman
89-90	H.F. Bode; Miss Wassman
90-91	H.F. Bode
91-92	H.F. Bode
92-93	H.F. Bode
93-94	H.F. Bode
94-95	H.F. Bode
95-96	H.F. Bode
96-97	H.F. Bode
97-98	H.F. Bode
98-99	H.F. Bode
99-100	H.F. Bode
100-101	H.F. Bode
101-102	H.F. Bode
102-103	H.F. Bode
103-104	H.F. Bode
104-105	H.F. Bode
105-106	H.F. Bode
106-107	H.F. Bode
107-108	H.F. Bode
108-109	H.F. Bode
109-110	H.F. Bode
110-111	H.F. Bode
111-112	H.F. Bode
112-113	H.F. Bode
113-114	H.F. Bode
114-115	H.F. Bode
115-116	H.F. Bode
116-117	H.F. Bode
117-118	H.F. Bode
118-119	H.F. Bode
119-120	H.F. Bode
120-121	H.F. Bode
121-122	H.F. Bode
122-123	H.F. Bode
123-124	H.F. Bode
124-125	H.F. Bode
125-126	H.F. Bode
126-127	H.F. Bode
127-128	H.F. Bode
128-129	H.F. Bode
129-130	H.F. Bode
130-131	H.F. Bode
131-132	H.F. Bode
132-133	H.F. Bode
133-134	H.F. Bode
134-135	H.F. Bode
135-136	H.F. Bode
136-137	H.F. Bode
137-138	H.F. Bode
138-139	H.F. Bode
139-140	H.F. Bode
140-141	H.F. Bode
141-142	H.F. Bode
142-143	H.F. Bode
143-144	H.F. Bode
144-145	H.F. Bode
145-146	H.F. Bode
146-147	H.F. Bode
147-148	H.F. Bode
148-149	H.F. Bode
149-150	H.F. Bode
150-151	H.F. Bode
151-152	H.F. Bode
152-153	H.F. Bode
153-154	H.F. Bode
154-155	H.F. Bode
155-156	H.F. Bode
156-157	H.F. Bode
157-158	H.F. Bode
158-159	H.F. Bode
159-160	H.F. Bode
160-161	H.F. Bode
161-162	H.F. Bode
162-163	H.F. Bode
163-164	H.F. Bode
164-165	H.F. Bode
165-166	H.F. Bode
166-167	H.F. Bode
167-168	H.F. Bode
168-169	H.F. Bode
169-170	H.F. Bode
170-171	H.F. Bode
171-172	H.F. Bode
172-173	H.F. Bode
173-174	H.F. Bode
174-175	H.F. Bode
175-176	H.F. Bode
176-177	H.F. Bode
177-178	H.F. Bode
178-179	H.F. Bode
179-180	H.F. Bode
180-181	H.F. Bode
181-182	H.F. Bode
182-183	H.F. Bode
183-184	H.F. Bode
184-185	H.F. Bode
185-186	H.F. Bode
186-187	H.F. Bode
187-188	H.F. Bode
188-189	H.F. Bode
189-190	H.F. Bode
190-191	H.F. Bode
191-192	H.F. Bode
192-193	H.F. Bode
193-194	H.F. Bode
194-195	H.F. Bode
195-196	H.F. Bode
196-197	H.F. Bode
197-198	H.F. Bode
198-199	H.F. Bode
199-200	H.F. Bode

Ben Schumacher

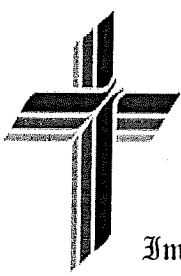
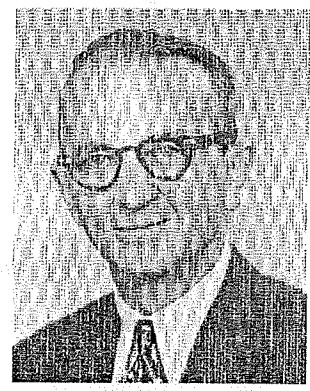
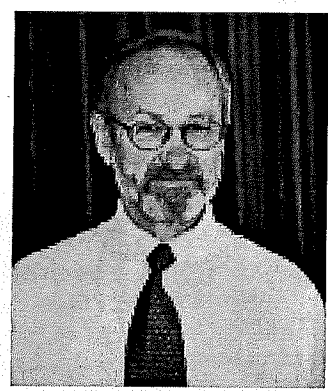
18-19	Richard Bendick	H.F. Bode
19-20	Richard Bendick	H.F. Bode
20-21	Richard Bendick	H.F. Bode
21-22	Richard Bendick	H.F. Bode
22-23	Richard Bendick	H.F. Bode
23-24	Richard Bendick	H.F. Bode
24-25	Richard Bendick	H.F. Bode
25-26	Richard Bendick	H.F. Bode
26-27	Richard Bendick	H.F. Bode
27-28	Richard Bendick	H.F. Bode
28-29	Richard Bendick	H.F. Bode
29-30	Richard Bendick	H.F. Bode
30-31	Richard Bendick	H.F. Bode
31-32	Richard Bendick	H.F. Bode
32-33	Richard Bendick	H.F. Bode
33-34	Richard Bendick	H.F. Bode
34-35	Richard Bendick	H.F. Bode
35-36	Richard Bendick	H.F. Bode
36-37	Richard Bendick	H.F. Bode
37-38	Richard Bendick	H.F. Bode
38-39	Richard Bendick	H.F. Bode
39-40	Richard Bendick	H.F. Bode
40-41	Richard Bendick	H.F. Bode
41-42	Richard Bendick	H.F. Bode
42-43	Richard Bendick	H.F. Bode
43-44	Richard Bendick	H.F. Bode
44-45	Richard Bendick	H.F. Bode
45-46	Richard Bendick	H.F. Bode
46-47	Richard Bendick	H.F. Bode
47-48	Richard Bendick	H.F. Bode
48-49	Richard Bendick	H.F. Bode
49-50	Richard Bendick	H.F. Bode
50-51	Richard Bendick	H.F. Bode
51-52	Richard Bendick	H.F. Bode
52-53	Richard Bendick	H.F. Bode
53-54	Richard Bendick	H.F. Bode
54-55	Richard Bendick	H.F. Bode
55-56	Richard Bendick	H.F. Bode
56-57	Richard Bendick	H.F. Bode
57-58	Richard Bendick	H.F. Bode
58-59	Richard Bendick	H.F. Bode
59-60	Richard Bendick	H.F. Bode
60-61	Richard Bendick	H.F. Bode
61-62	Richard Bendick	H.F. Bode
62-63	Richard Bendick	H.F. Bode
63-64	Richard Bendick	H.F. Bode
64-65	Richard Bendick	H.F. Bode
65-66	Richard Bendick	H.F. Bode
66-67	Richard Bendick	H.F. Bode
67-68	Richard Bendick	H.F. Bode
68-69	Richard Bendick	H.F. Bode
69-70	Richard Bendick	H.F. Bode
70-71	Richard Bendick	H.F. Bode
71-72	Richard Bendick	H.F. Bode
72-73	Richard Bendick	H.F. Bode
73-74	Richard Bendick	H.F. Bode
74-75	Richard Bendick	H.F. Bode
75-76	Richard Bendick	H.F. Bode
76-77	Richard Bendick	H.F. Bode
77-78	Richard Bendick	H.F. Bode
78-79	Richard Bendick	H.F. Bode
79-80	Richard Bendick	H.F. Bode
80-81	Richard Bendick	H.F. Bode
81-82	Richard Bendick	H.F. Bode
82-83	Richard Bendick	H.F. Bode
83-84	Richard Bendick	H.F. Bode
84-85	Richard Bendick	H.F. Bode
85-86	Richard Bendick	H.F. Bode
86-87	Richard Bendick	H.F. Bode
87-88	Richard Bendick	H.F. Bode
88-89	Richard Bendick	H.F. Bode
89-90	Richard Bendick	H.F. Bode
90-91	Richard Bendick	H.F. Bode
91-92	Richard Bendick	H.F. Bode
92-93	Richard Bendick	H.F. Bode
93-94	Richard Bendick	H.F. Bode
94-95	Richard Bendick	H.F. Bode
95-96	Richard Bendick	H.F. Bode
96-97	Richard Bendick	H.F. Bode
97-98	Richard Bendick	H.F. Bode
98-99	Richard Bendick	H.F. Bode
99-100	Richard Bendick	H.F. Bode
100-101	Richard Bendick	H.F. Bode
101-102	Richard Bendick	H.F. Bode
102-103	Richard Bendick	H.F. Bode
103-104	Richard Bendick	H.F. Bode
104-105	Richard Bendick	H.F. Bode
105-106	Richard Bendick	H.F. Bode
106-107	Richard Bendick	H.F. Bode
107-108	Richard Bendick	H.F. Bode
108-109	Richard Bendick	H.F. Bode
109-110	Richard Bendick	H.F. Bode
110-111	Richard Bendick	H.F. Bode
111-112	Richard Bendick	H.F. Bode
112-113	Richard Bendick	H.F. Bode
113-114	Richard Bendick	H.F. Bode
114-115	Richard Bendick	H.F. Bode
115-116	Richard Bendick	H.F. Bode
116-117	Richard Bendick	H.F. Bode
117-118	Richard Bendick	H.F. Bode
118-119	Richard Bendick	H.F. Bode
119-120	Richard Bendick	H.F. Bode
120-121	Richard Bendick	H.F. Bode
121-122	Richard Bendick	H.F. Bode
122-123	Richard Bendick	H.F. Bode
123-124	Richard Bendick	H.F. Bode
124-125	Richard Bendick	H.F. Bode
125-126	Richard Bendick	H.F. Bode
126-127	Richard Bendick	H.F. Bode
127-128	Richard Bendick	H.F. Bode
128-129	Richard Bendick	H.F. Bode
129-130	Richard Bendick	H.F. Bode
130-131	Richard Bendick	H.F. Bode
131-132	Richard Bendick	H.F. Bode
132-133	Richard Bendick	H.F. Bode
133-134	Richard Bendick	H.F. Bode
134-135	Richard Bendick	H.F. Bode
135-136	Richard Bendick	H.F. Bode
136-137	Richard Bendick	H.F. Bode
137-138	Richard Bendick	H.F. Bode
138-139	Richard Bendick	H.F. Bode
139-140	Richard Bendick	H.F. Bode
140-141	Richard Bendick	H.F. Bode
141-142	Richard Bendick	H.F. Bode
142-143	Richard Bendick	H.F. Bode
143-144	Richard Bendick	H.F. Bode
144-145	Richard Bendick	H.F. Bode
145-146	Richard Bendick	H.F. Bode
146-147	Richard Bendick	H.F. Bode
147-148	Richard Bendick	H.F. Bode
148-149	Richard Bendick	H.F. Bode
149-150	Richard Bendick	H.F. Bode
150-151	Richard Bendick	H.F. Bode
151-152	Richard Bendick	H.F. Bode
152-153	Richard Bendick	H.F. Bode
153-154	Richard Bendick	H.F. Bode
154-155	Richard Bendick	H.F. Bode
155-156	Richard Bendick	H.F. Bode
156-157	Richard Bendick	H.F. Bode
157-158	Richard Bendick	H.F. Bode
158-159	Richard Bendick	H.F. Bode
159-160	Richard Bendick	H.F. Bode
160-161	Richard Bendick	H.F. Bode
161-162	Richard Bendick	H.F. Bode
162-163	Richard Bendick	H.F. Bode
163-164	Richard Bendick	H.F. Bode
164-165	Richard Bendick	H.F. Bode
165-166	Richard Bendick	H.F. Bode
166-167	Richard Bendick	H.F. Bode
167-168	Richard Bendick	H.F. Bode
168-169	Richard Bendick	H.F. Bode
169-170	Richard Bendick	H.F. Bode
170-171	Richard Bendick	H.F. Bode
171-172	Richard Bendick	H.F. Bode
172-173	Richard Bendick	H.F. Bode
173-174	Richard Bendick	H.F. Bode
174-175	Richard Bendick	H.F. Bode
175-176	Richard Bendick	H.F. Bode
176-177	Richard Bendick	H.F. Bode
177-178	Richard Bendick	H.F. Bode
178-179	Richard Bendick	H.F. Bode
179-180	Richard Bendick	H.F. Bode
180-181	Richard Bendick	H.F. Bode
181-182	Richard Bendick	H.F. Bode
182-183	Richard Bendick	H.F. Bode
183-184	Richard Bendick	H.F. Bode
184-185	Richard Bendick	H.F. Bode
185-186	Richard Bendick	H.F. Bode
186-187	Richard Bendick	H.F. Bode
187-188	Richard Bendick	H.F. Bode
188-189	Richard Bendick	H.F. Bode
189-190	Richard Bendick	H.F. Bode
190-191	Richard Bendick	H.F. Bode
191-192	Richard Bendick	H.F. Bode
192-193	Richard Bendick	H.F. Bode
193-194	Richard Bendick	H.F. Bode
194-195	Richard Bendick	H.F. Bode
195-196	Richard Bendick	H.F. Bode
196-197	Richard Bendick	H.F. Bode
197-198	Richard Bendick	H.F. Bode
198-199	Richard Bendick	H.F. Bode
199-200	Richard Bendick	H.F. Bode

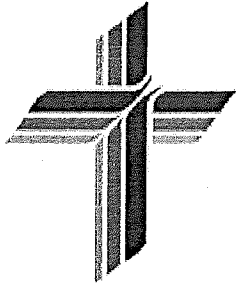
Elmer Hill
John Roth
John Roth
J. Floyd Breith
Emma Pilgrim
Emma Pilgrim

H.F. Bode

Gross

Fine teachers have always been a blessing at Immanuel. Mr. Peterman (right) has served Immanuel for longer than any other principal, at 13 years. Mr. Bode (far right) has served as teacher for longer than any other, at 46 years.





Teachers Over the Years

TEACHERS, 1967-2004

YEAR, TEACHER AND GRADE OR SUBJECT

- 67-68 - J. Kasch, K; E. Hoffmann, 1&2; Mr. Halschien, 3&4; D. Medler, 5&6; Mrs. Halschien, 7&8
- 68-69 - J. Kasch, K; E. Hoffmann, 1&2; Mrs. Kling, 3&4; D. Medler, 5&6; J. Welch, 7&8
- 69-70 - J. Kasch, K; E. Hoffmann, 1&2; J. Koop, 3&4; D. Medler, 5&6; J. Welch, 7&8
- 70-71 - J. Kasch, K; E. Hoffmann, 1&2; Felzien, 3&4; D. Medler, 5&6; J. Welch, 7&8
- 71-72 - J. Kasch, K; S. Torbeck, 1&2; L. Torbeck, 3&4; D. Medler, 5&6
- 72-73 - J. Kasch, K; S. Torbeck, 1&2; L. Torbeck, 3&4; D. Medler, 5&6
- 73-74 - J. Kasch, K; S. Reick, 1&2; Mr. Reick, 3&4; D. Medler, 5&6
- 74-75 - J. Kopp, Pre-k; J. Kasch, K; A. Loos, 1&2; J. Osborne, 3&4; D. Medler, 5&6
- 75-76 - J. Kopp, Pre-k; J. Kasch, K; A. Loos, 1&2; C. Peterman, 3&4; V. Koepke, 5&6
- 76-77 - C. Regez, Pre-k; J. Kopp, K; A. Loos, 1&2; J. Uttich, 3&4; C. Peterman, 5&6
- 77-78 - C. Regez, Pre-k; J. Kopp, K; A. Loos, 1&2, J. Uttich, 3&4; C. Peterman, 5-7
- 78-79 - L. Aumann, Pre-k; J. Kopp, K; A. Loos, 1&2; J. (Uttich) VanRaden, 3&4; C. Peterman, 5&6; K. Martin, 7&8
- 79-80 - L. Aumann, Pre-k; S. Zulke, K; A. Loos, 1&2; J. VanRaden, 3&4; C. Peterman, 5&6; K. Martin, 7&8
- 80-81 - J. Kopp, Pre-k&K; S. Zulke, 1; A. (Loos) Wessel, 2; J. VanRaden, 3&4; C. Peterman, 5&6; K. Martin, 7&8
- 81-82 - J. Kopp, Pre-k, K, SS; S. Zulke, 1-4; A. Wessel, 1-3; J. VanRaden 4&5 1st Sem; C. Peterman, 5-7; D. Peterman, 5-8; K. Martin, 7&8
- 82-83 - J. Kopp, Pre-k&K 1st Sem, D. Peterman, 3&4, Pre-k 2nd Sem; V. Trimble, Pre-k 2nd Sem; A. Wessel, 1 1st Sem; C. Marsh, 1 2nd Sem; S. Zulke, 3&4; C. Peterman, 5&6; G. Karpinsky, 7&8; J. VanRaden, Art
- 83-84 - D. Peterman, Pre-k, 3&4; V. Trimble, K; S. Markworth, 1&2; S. Zulke, 3&4; C. Peterman, 5&6; G. Karpinsky, 7&8, J. VanRaden, Art; C. Mastrianni, Art
- 84-85 - D. Peterman, Pre-k, 3&4; J. Gornell, K; S. Markworth, 1&2; S. Zulke, 3&4; C. Peterman, 5&6; G. Karpinsky, 7&8; J. VanRaden, Art
- 85-86 - D. Peterman, Pre-k, 3&4; J. Gornell, Pre-k&K; S. Markworth, 1&2; S. Zulke, 3&4; C. Peterman, 5&6; G. Karpinsky, 7&8
- 86-87 - B. Jaynes, Pre-k3; D. Peterman, Pre-k4, 3&4; J. Gornell, Pre-k4&K; V. Schelp, K (for Mat. Leave); S. Markworth, 1&2; S. Zulke, 3&4; C. Peterman, 5&6; G. Karpinsky, 7&8; V. (Koepke) Holmes, Art; C. Lutz, Art
- 87-88 - D. Peterman, Pre-k; J. Gornell, K; B. Jaynes, 1&2; S. Zulke, 3&4; G. Karpinsky, 5&6; C. Peterman, 7&8; V. Holmes, Art; C. Lutz, Art; A. Schwichtenberg, Gifted (87-Present); D. Dietmeier, Music (87-Present)
- 88-89 - C. Truckenmiller, Pre-k; J. Gornell, K; B. Jaynes, 1&2; S. Zulke, 3&4; D. Barz, 5&6; M. Welton, 7&8; V. Holmes, Art, 5&6; C. Lutz, Art
- 89-90 - C. Truckenmiller, Pre-k; T. Thompson, Pre-k; K. Gieseke, 1&2; D. Carr, 2 2nd Sem; S. Zulke, 3&4; R. White, 5&6; M. Welton, 7&8; V. Holmes, Art; C. Lutz, Art; R. McGee, French
- 90-91 - B. Larson, Pre-k; M. Taylor, K; K. Gieseke, 1; D. Carr, 2; S. Zulke, 3; K. Meyer, 3&4; R. White, 5&6; 7&8, M. Welton; V. Holmes, Art, C. Lutz, Art. R. McGee, French

91-92 - B. Larson, Pre-k; V. Holmes, K; K. Gieseke, 1; C. Truckenmiller, 2; S. Zulke, 3; B. Barton, 3; K. Meyer, 4; R. White, 5&6; M. Welton, 7&8; D. Oberle, Art; Rev. Schoenknecht, Religion

92-93 - B. Larson, Pre-k; V. Holmes, K; K. Gieseke, 1; C. Truckenmiller, 2; S. Zulke, 3; K. Meyer, 4; R. White, 5; T. Mindermann, 6; M. Welton, 7&8, B. Barton, 7&8; D. Oberle, Art, Rev. Schoenknecht, Religion

93-94 - B. Larson, Pre-k; V. Holmes, K; K. Gieseke, 1; C. Truckenmiller, 2; D. Carr, 3; K. Meyer, 4; R. White, 5; T. Minderman, 6; M. Welton, 7&8, B. Barton, 7&8, D. Oberle, Art

93-94 - B. Larson, Pre-k; V. Holmes, K; K. Gieseke, 1; C. Truckenmiller, 2; D. Carr, 3 1st Sem; K. Wiest, 3 2nd Sem; K. Meyer, 4; R. White, 5; T. Mindermann, 6; M. Welton, 7&8; B. Barton, 7&8; J. LeBaron, 7&8; D. Oberle, Art; L. Seiple, PE

94-95 - B. Larson, Pre-k&K; K. Gieseke, 1; C. Truckenmiller, 2; K. Wiest, 3; K. Meyer, 4; R. White, 5; V. Holmes, 6; M. Welton, 7&8; B. Barton, 7&8; J. LeBaron, 7&8; L. Seiple, PE

95-96 - B. Larson, Pre-k&K; K. Gieseke, 1; C. Truckenmiller, 2; K. Denkert, 3; K. Meyer, 4; R. White, 5; J. Zink, 6; M. Welton, 7&8; B. Barton, 7&8; R. Youngblut, 7&8; L. Seiple, PE

96-97 - B. Larson, Pre-k&K; K. Gieseke, 1; C. Truckenmiller, 2; B. Glandorf, 3; K. Meyer, 4; R. White, 5; P. Molter, 6; M. Welton, 7&8; B. Barton, 7&8; R. Youngblut, 7&8; L. Seiple, PE; J. Kroeger, Ext. Care

97-98 - B. Larson, Pre-k&K; K. Gieseke, 1; C. Truckenmiller, 2; B. Glandorf, 3; K. Meyer, 4; R. White, 5; P. (Molter) Julius, 6; M. Welton, 7&8; B. Barton, 7&8; S. Janis, 6-8; L. Seiple, PE; J. Kroeger, Ext. Care; N. Luepke, 8

98-99 - B. Larson, Pre-k&K; K. Gieseke, 1; C. Truckenmiller, 2; B. Glandorf, 3; K. (Meyer) Vehmeier, 4; R. White, 5; P. Julius, 6; M. Welton, 6-8; B. Barton, 7&8; S. Janis, 6-8; S. Bauschke, PE; J. (Kroeger) Augsburg, Ext. Care; N. Luepke, 8

99-00 - B. Larson, Pre-k&K; K. Gieseke, 1; C. Truckenmiller, 2; B. Glandorf, 3; K. Vehmeier, 4; R. White, 5; P. Julius, 6&Computer; M. Welton, 6-8; B. Barton, 7&8; S. Janis, 6-8; K. Mysliwiec, PE; L. Vories, Art; J. Augsburg, Ext. Care; N. Luepke, 8

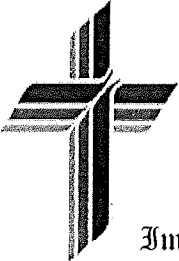
00-01 - B. Larson, Pre-k&K; K. Gieseke, 1; C. Truckenmiller, 2; B. Glandorf, 3; K. Vehmeier, 4; R. White, 5; P. Julius, 6&Computer; M. Welton, 6-8; B. Barton, 7&8; S. Janis, 6-8; K. Mysliwiec, PE; L. Vories, Art; J. Augsburg, Ext. Care; N. Luepke, 8

01-02 - B. Larson, Pre-k&K; K. Gieseke, 1; C. Truckenmiller, 2; B. Glandorf, 3; K. Vehmeier, 4; R. White, 5; P. Julius, Computer; M. Welton, 6-8; B. Barton, 7&8; S. Janis, 6-8; K. Mysliwiec, PE; J. Buttner, Art; S. Yartzak, Ext. Care; N. Luepke, 8

02-03 - B. Larson, Pre-K&K; K. Gieseke, 1; C. Truckenmiller, 2; B. Glandorf, 3; K. Vehmeier, 4; R. White, 5; P. Julius, Computer; M. Welton, 6-8, B. Barton, 7&8, S. Janis, 6-8, K. Mysliwiec, PE; J. Buttner, Art; S. Yartzak, Pre-k& Ext. Care, A. White, 6; N. Luepke, 8

03-04 - K. Baumgarten, Pre-k; B. Larson, K; K. Gieseke, 1; C. Truckenmiller, 2; B. Glandorf, 3; K. Vehmeier, 4; R. White, 5; P. Julius, Computer; M. Welton, 6-8; B. Barton, 7&8; S. Janis, 6-8; K. Mysliwiec, PE; J. Buttner, Art; S. Yartzak, Ext. Care; A. White, 6; N. Luepke, 8

COOKS: Mrs. Temple, Mrs. Millie Schroeder, Mrs. Jacobs, Mr. Johnson, Mrs. Marge Eilders, Mrs. Susan Eilders, Mrs. Beth Nagel SECRETARIES: Mrs. Stanton, Mrs. Cavanaugh JANITORS: Mr. Keppen, Mr. Weink, Mr. Ruthe, Mr. Brockhausen, Mr. Rackow, Mr. Konichek, Mr. and Mrs. Stodden, Mr. Quiggle, Mr. Collins



Mrs. Stanton, secretary for over 25 years.



Inmanuel, Our God With Us. Matthew 1:23

